



MX-6050V/5050V MX-4050V/3550V/3050V

Digital Full Colour Multifunctional System

www.sharp.co.uk

SHARP
Be Original.

Shaped around you.

New technology. A growing team. Fresh directions. There's no telling what opportunities (or challenges) your business may face. So when choosing a new MFP, invest in one that can adapt to your needs – whatever the future holds.

Today, it might be that you have fairly simple printing, scanning and copying needs. But as new ways of sharing information become embedded in working life, or the needs of your workforce change, it's important your office MFP can keep pace.

Five versatile models

With a broad choice of options and upgrades available, these next generation A3 colour MFPs are as ready for today, as they are for tomorrow.

Options include:

High performance: MX-6050V and MX-5050V which print and copy at an impressive 60 and 50 pages per minute (ppm) respectively.

Mid-range: 40 ppm MX-4050V and 35 ppm MX-3550V.

For smaller workgroups:

30 ppm MX-3050V.

All the essentials you need

All the essential functions you'd expect come as standard – with top quality results. You can print paper sizes of up to SRA3 and weights of 300g/m², giving you plenty of versatility. And with the ability to mix batches of colour and black & white documents of different weights and sizes, scanning is simple and speedy.

Features such as our auto process control and developer refresh system give you consistently high-quality output on every job. And, with Auto Colour Mode there's no need to fine-tune anything when scanning and copying colour documents – even from mixed-content originals.

Finally, because no one likes interruptions, the the MX-6050V and MX-5050V let you top up the toner without pausing what you're doing.



Plus the extras you want

All five models are cloud capable and can be customised and upgraded to meet your requirements.

Options include:

- A range of professional finishing styles including saddle-stitching, manual and stapleless stapling
- Job Separator Tray to sort print, copy and fax jobs
- Single Sign-On for connecting to popular cloud storage services
- Sharp Open Systems Architecture (OSA) for integrating with network- and cloud-based applications
- Compact PDF capability for scanning to convenient file sizes
- Adobe® PostScript® 3™ to enhance graphic processing
- Fax expansion
- Optimised Software Solutions for easier and more productive scanning, printing and mobile connectivity



Mix and match features to make it your own.



High productivity, less waste.

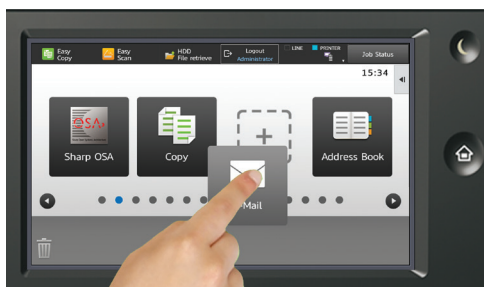
User-friendly design together with time (and energy) saving features mean our MFPs fit right into office life. Helping everyone do more with their working day.

At Sharp, we know that advanced technology isn't good enough on its own. To make a real difference to everyday life, it has to be easy to use. And the same goes for our MFPs.

Master key functions in moments

No one wants to read a manual to complete simple office tasks. So we've made sure that the features used day-in, day-out are easily accessible from a 10.1" tiltable colour LCD touchscreen. This can be customised to display your most-used functions to further enhance your productivity. And we've included integrated web browsing.

Even advanced controls can be mastered in moments. But if you ever have a question, just check the 'quick help' guide embedded in every function.



Make it your own. Drag and drop icons to customise your home screen.

Use it your way

If you work in a larger office, you don't want to have to stop everything to dash to the printer to pick up sensitive documents. With flexible Pull Printing capability, our MFPs are designed to work around you and fit seamlessly into your office routine.

With Print Release, set an MFP as a print server and print your documents from any other networked MFP in the same range – at a time and place you choose*. Giving you the flexibility of collecting your output at a time that's best for you. And peace of mind that sensitive documents won't be left unattended.



Print to your schedule. Collect from any networked MFP.

Up your energy efficiency

When it comes to reducing energy usage and running costs in the workplace, even the smallest savings can add up. Features such as low melt toner, Eco Scan, a short warm up time and automatic, configurable power settings make sure our MFPs are highly energy efficient.

What's more, the control panel prompts the user to choose the most environmentally friendly option for every print or copy job – and the toner cartridge ejects automatically only when it's completely empty. All helping you to avoid costly waste.

* Up to 5 networked devices total.



Forward-thinking connectivity.

We're accessing and sharing information in more ways than ever before. To help your business face the challenges and seize the opportunities of this connected world, invest in technology designed for the future.

Every workplace has their own individual set up. From a mix of colleagues working on site and remotely, to using a whole host of digital devices and online systems to get work done.

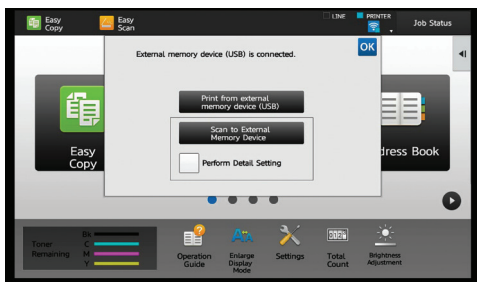
Our MFPs are designed to be versatile, with upgrades and adaptations available to tailor them to your individual requirements.

Designed for multiple devices

From desktops and laptops to phones and tablets, we're used to accessing data and information in a variety of ways. With these MFPs, you can print from your preferred device, too.

Popular mobile technologies such as Google Cloud Print™ and Apple AirPrint®*1 are all supported. Alternatively, you can connect with the MFP via NFC*2 (Near Field Communication) or use your phone to scan the QR code on the MFP*3.

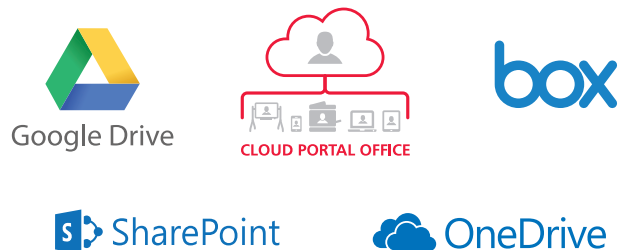
If you prefer to print from a USB, simply plug it into the MFP, choose your Microsoft Office files and you're ready to go*4. You can also scan and save documents straight to a USB.



Mobile. Cloud. USB. Print your way.

Cloud and email connections

Access all your files with just a few taps. Reach into the cloud with direct access to file-sharing and storage services such as Google Drive™, OneDrive®, SharePoint®, Microsoft Online, Box and Sharp Cloud Portal Office – all accessible from the MFP touchscreen.



And, because we know that no one likes having to constantly re-enter log-in details, use Single Sign-On to access many of your favourite cloud services quickly and easily.

Finally, convenient mail service connectors mean you can send scanned data directly to recipients from your Gmail™ or Microsoft Exchange account.

*1 MX-PK13 Post Script option will be required

*2 NFC requires commercially available NFC card reader.

*3 MX-EB18 Wireless LAN Adaptor maybe required in some situations.

*4 Optional MX-PU10 required to print Microsoft Office files.

In safe hands

With more and more information shared digitally, you want to make sure that only the right people can access it. So it's reassuring to know that our MFPs come with robust security features to keep your valuable data safe and sound.

Control access with passwords and user authentication, or with a third party card reader for adding even stronger security.

Encrypt and erase data from the MFP hard disk automatically and on-demand. And, when the time comes to replace the MFP, use the Data Initialisation feature to erase all your data.

Combat cyber attacks with a secure network interface, SSL, IPsec and port-based network protection.

Prevent unauthorised usage such as the copying, scanning, faxing and filing of confidential documents, using the Document Control function*¹.

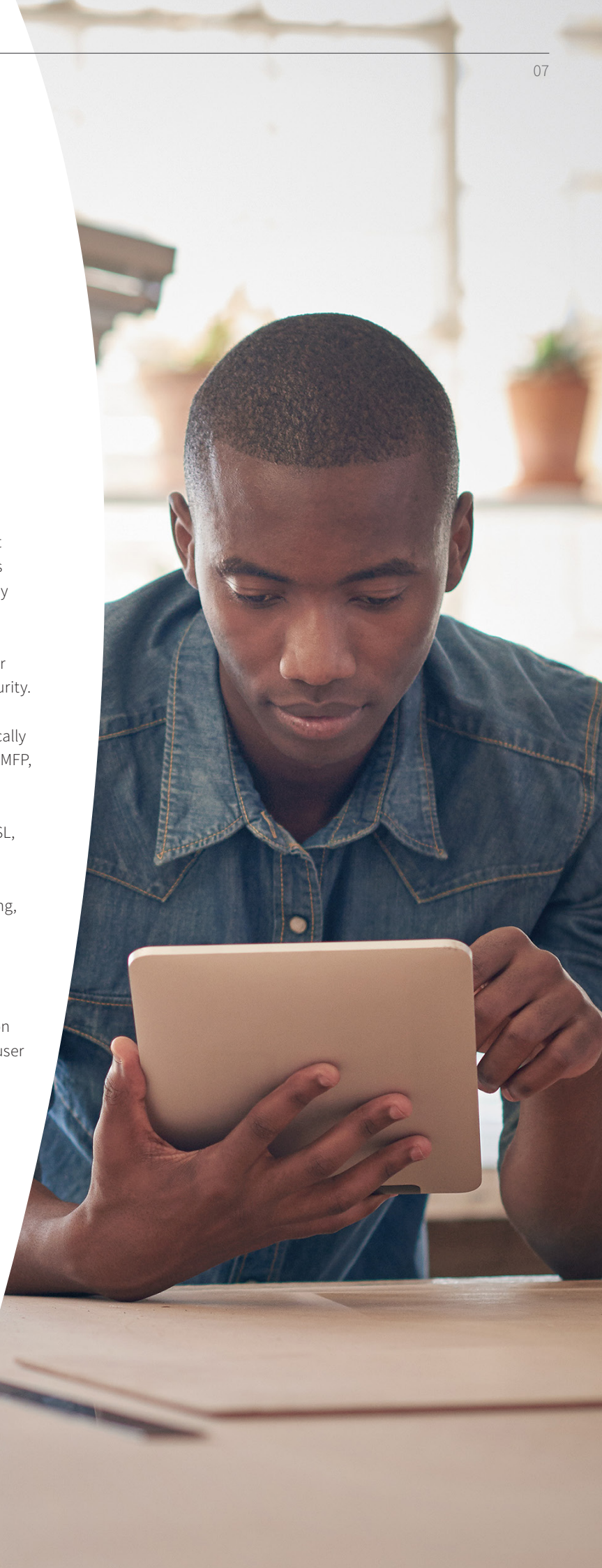
Guard against accidents with features including Hidden Pattern Print for revealing watermarks, password protection for PDFs and Confidential PIN Printing, which requires the user to be present at the machine.

For total peace of mind, our MFPs also come with S/MIME for secure email communications, as well as advanced data protection and high security logins. And for maximum protection, as required by government, military and legal organisations, your IT administrator can permanently enable*² the highest level of security. This conforms to the Hard Copy Device Protection Profile (HCD PP*³) standard.

*¹ Requires optional Data Security Kit.

*² Once enabled, some functions may not be available.

*³ HCD PP ver1.0 – non Common Criteria.



Unlock greater efficiency.

Printing, copying and scanning needn't be a time-consuming distraction from other tasks. With a choice of extra-value options, our MFPs become an integral part of your information infrastructure – boosting workplace efficiency.

When day-to-day office tasks become fast, efficient and easy, every workgroup has time to focus on more important projects. Our next generation MFPs support greater workplace productivity by transforming printing, copying and scanning for the better.

And that's just the start. When paired with extra-value options such as Cloud Portal Office and one or more of our Optimised Software Solutions, you can make it even easier to stay on top of how your workforce is accessing and sharing data. Allowing you to spot savings, reduce usage costs and reach new levels of efficiency across your business.

Introducing Cloud Portal Office

Capture, store and share key documents easily with our award-winning cloud-based document management system. Cloud Portal Office makes it simple to create a unified digital ecosystem that brings together the MFP, computers, tablets, phones and even our Sharp BIG PAD interactive display. Giving you and your team access to vital documents from any web-enabled device.

Cloud Portal Office becomes your gateway to every document you've stored in the cloud. And, by allowing you to scan automatically indexed documents directly to the cloud and alert colleagues from the MFP, you can give everyone the information they need, fast.





Optimised Software Solutions

Choose one or more of our Optimised Software Solutions – helping you boost efficiency and reduce costs in key areas that are important to your business.

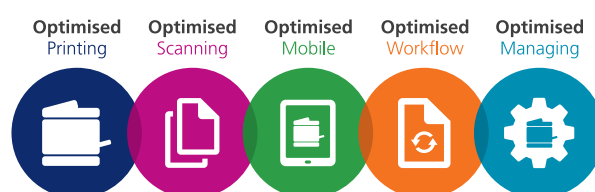
Optimised Printing: monitor and manage your print and copy usage. Make sure it's only being used by authorised people, track and recover costs and reduce waste.

Optimised Scanning: save time and avoid costly errors by simplifying and automating how you store and share documents – whatever their format.

Optimised Mobile: create a more flexible team by helping people connect tablets, phones and laptops simply and securely, so they're always in touch.

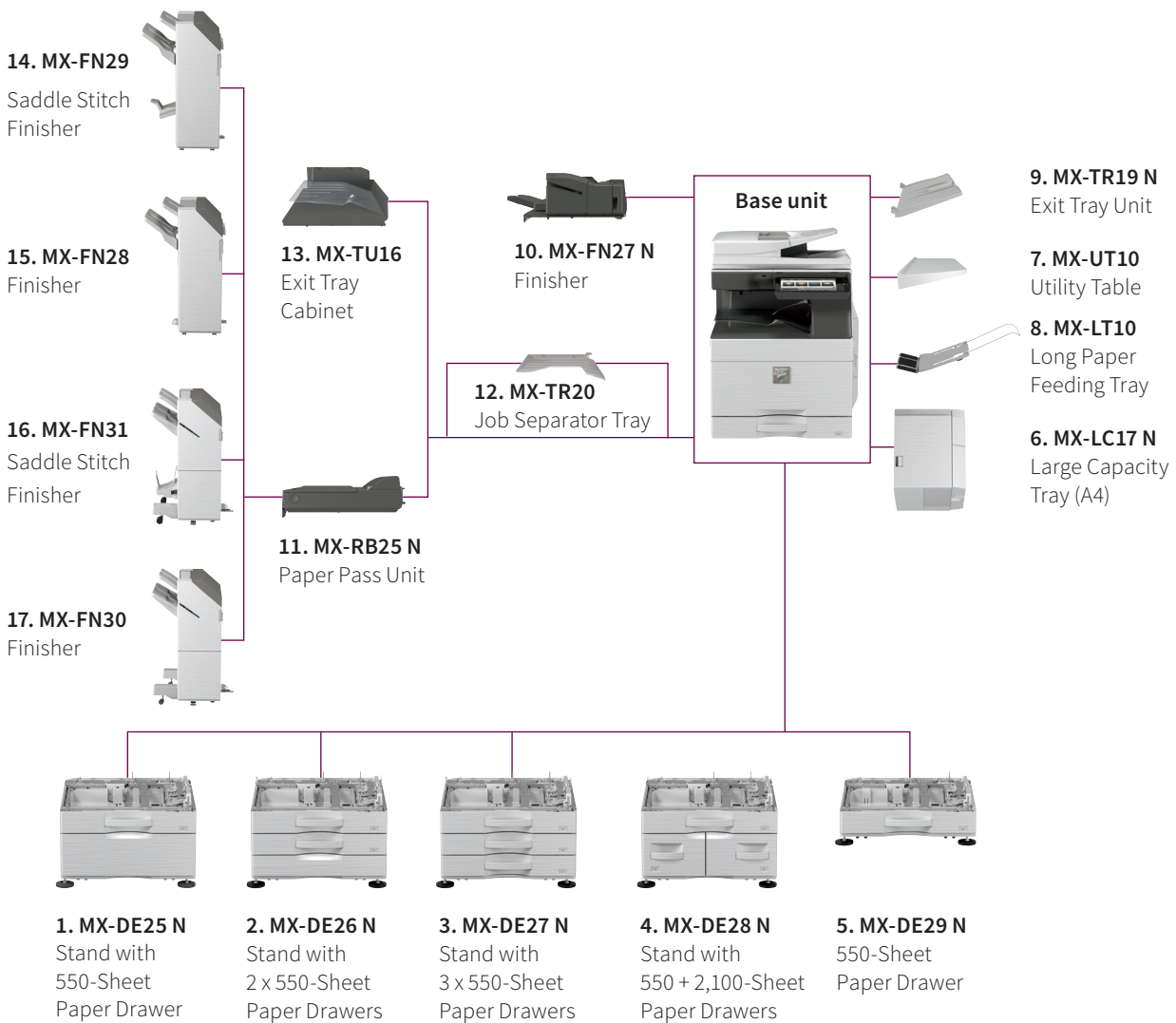
Optimised Workflow: restore the productivity you need to achieve and maintain profitable growth by streamlining and simplifying repetitive tasks.

Optimised Managing: ease the burden of managing your MFPs and reduce the cost of ownership.



Smarter technology supports efficient, effective teams.

Configurations



Options

Base Unit

- 1. MX-DE25 N Stand with 550-Sheet Paper Drawer**
550 sheets*¹, SRA3 to A5R (60 - 300 g/m²)
- 2. MX-DE26 N Stand with 2 x 550-Sheet Paper Drawer**
550 sheets*¹ each for lower and upper trays, SRA3 to A5R (60 - 300 g/m²)
- 3. MX-DE27 N Stand with 3 x 550-Sheet Paper Drawer**
550 sheets*¹ each for lower and upper trays, SRA3 to A5R (60 - 300 g/m²)
- 4. MX-DE28 N Stand with 550 + 2,100-Sheet Paper Drawer**
Upper tray: SRA3 - A5R, 550 sheets*¹ (80 g/m²)
Lower tray (Left): A4, 1,200 sheets*¹ (60 - 105 g/m²)
Lower tray (Right): A4 - B5, 900 sheets*¹ (60 - 105 g/m²)
- 5. MX-DE29 N 550-Sheet Paper Drawer**
550 sheets*¹, SRA3 to A5R (60 - 300 g/m²)
- 6. MX-LC17 N Large Capacity Tray (A4)**
3,000 sheets*¹, A4 - B5 (60 - 220 g/m²)
- 7. MX-UT10 Utility Table**

Finishing

- 8. MX-LT10 Long Paper Feeding Tray**
Recommended for banner printing
- 9. MX-TR19 N Exit Tray Unit**
- 10. MX-FN27 N Inner Finisher**
A3 - B5 (offset/staple), SRA3 - A5R (non offset)
Offset tray (upper): max. 500-sheet paper capacity*¹
Stapling capacity: max. 50-sheet multi-position staple*¹
Staple position: 3 locations (front, rear or 2 point stitching)
Manual Stapling: 1-point at rear (Flat), 45 sheets (64 g/m²), 40 sheets (80 g/m²)
Stapleless capacity: max. 5-sheet (64 g/m²), 4 sheet (65 - 81.4 g/m²), 3 sheet (81.5 - 105 g/m²)
Stapleless position: 1-point at rear (Slant), A3 - B5
- Optional Punch Module for MX-FN27 N:**
MX-PN14C - 2/4 Hole Punch Module
MX-PN14D - 4 Hole Wide Punch Module

*¹ Number of sheets based on 80 g/m².

Options

11. MX-RB25 N Paper Pass Unit

Required when using MX-FN28, MX-FN29, MX-FN30 & MX-FN31

12. MX-TR20 Job Separator Tray

Requires MX-TU16 Exit Tray Cabinet

13. MX-TU16 Exit Tray Cabinet

14. MX-FN29 1k Saddle Stitch Finisher

A3W - A5R (offset/staple), SRA3 - A5R (non offset)

Offset tray (upper): max.1,000-sheet paper capacity*¹

Stapling capacity: max. 50-sheet multi-position staple*¹

Staple position: 1-point at front (Flat), 1-point at back (Flat), 2 point stitching

Saddle stitch tray (lower): 7 sets (11-15 sheets), 10 sets (6-10 sheets),

20 sets (1-5 sheets). 15 sheets max per set

15. MX-FN28 1k Finisher

A3W - A5R (offset/staple), SRA3 - A5R (non offset)

Offset tray (upper): max.1,000-sheet paper capacity*¹

Stapling capacity: max. 50-sheet multi-position staple*¹

Staple position: 1-point at front (Flat), 1-point at back (Flat), 2 point stitching

Optional Punch Module for MX-FN29 & MX-FN28:

MX-PN15C - 2/4 Hole Punch Module

MX-PN15D - 4 Hole Wide Punch Module

16. MX-FN31 3k Saddle Stitch Finisher

A3 - B5 (offset/staple), SRA3 - A5R (non offset)

Offset tray (upper): max.3,000-sheet paper capacity*¹

Stapling capacity: max. 65-sheet multi-position staple*¹

Staple position: 1-point at front (Slant), 1-point at back (Slant), 2 point stitching

Manual Stapling: 1-point at rear (Flat), 45 sheets (64 g/m²), 40 sheets (80 g/m²)

Stapleless capacity: max.5-sheet (64 g/m²), 4 sheet (65 - 81.4 g/m²),

3 sheet (81.5 - 105 g/m²)

Stapleless position: 1-point at rear (Slant), A3 - B5

Saddle stitch tray (lower): 10 sets (11-15 sheets), 15 sets (6-10 sheets),

25 sets (1-5 sheets). 20 sheets max per set

17. MX-FN30 3k Finisher

A3 - B5 (offset/staple), SRA3 - A5R (non offset)

Offset tray (upper): max.3,000-sheet paper capacity*¹

Stapling capacity: max. 65-sheet multi-position staple*¹

Staple position: 1-point at front (Slant), 1-point at back (Slant), 2 point stitching

Manual Stapling: 1-point at rear (Flat), 45 sheets (64 g/m²), 40 sheets (80 g/m²)

Stapleless capacity: max.5-sheet (64 g/m²), 4 sheet (65 - 81.4 g/m²),

3 sheet (81.5 - 105 g/m²)

Stapleless position: 1-point at rear (Slant), A3 - B5

Optional Punch Module for MX-FN31 & MX-FN30:

MX-PN16C - 2/4 Hole Punch Module

MX-PN16D - 4 Hole Wide Punch Module

Printing

MX-PK13 PS3 Expansion Kit

Enables PostScript printing

MX-PU10 Direct Print Expansion Kit

MX-PF10 Barcode Font Kit

Enables barcode printing

Faxing

MX-FX15 Fax Expansion Kit

MX-FWX1 Internet Fax Expansion Kit

Connectivity

MX-EB18 Wireless LAN Adaptor

Enables connection to wireless networks

Scanning

MX-EB11 Enhanced Compression Kit

Enables creation of high compression PDFs

AR-SU1 Stamp Unit

Marks already scanned documents for checking

Sharpdesk Licenses

MX-USX1/X5

1/5-License Kit

MX-US10/50/A0

10/50/100-License Kit

Sharp OSA®

MX-AMX1 Application Integration Module

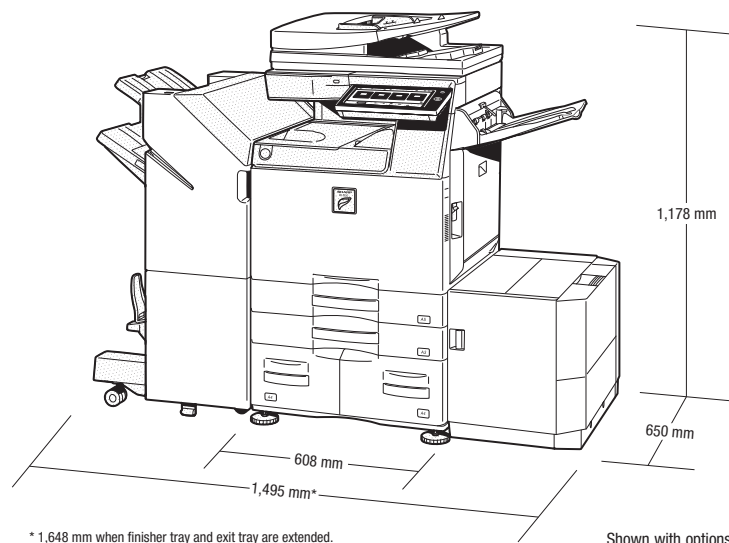
MX-AMX2 Application Communication Module

MX-AMX3 External Account Module

Security

MX-FR51U Data Security Kit

Commercial Version



*¹ Number of sheets based on 80 g/m².

Specifications

General

Engine speed (ppm/cpm) (Max)	A4*¹	A3	SRA3
MX-6050V	60	30	29
MX-5050V	50	26	24
MX-4050V	40	20	18
MX-3550V	35	18	16
MX-3050V	30	16	15
Control panel display	10.1-inch colour LCD touchscreen		
Paper size (Min – Max)	A5* ² -SRA3		
Paper weight (g/m ²)			
Tray	60 - 300		
Multi-bypass	55 - 300		
Paper capacity (Std – Max)			
Sheets	650 - 6,300		
Drawers	1 - 4 (plus bypass tray)		
Warm-up time * ³ (seconds)			
MX-6050V/MX-5050V	15		
MX-4050V/MX-3550V/MX-3050V	10		
Memory (GB)			
Copier/Printer (shared)	5		
HDD* ⁴	250		
Power requirements	Rated local AC voltage ±10%, 50/60 Hz		
Power consumption (kW) (Max)			
MX-6050V/MX-5050V	2.07 (220 to 240V)		
MX-4050V/MX-3550V/MX-3050V	1.84 (220 to 240V)		
Dimensions (mm) (W x D x H)* ⁵	608 x 650 x 834		
Weight (kg)			
MX-6050V/MX-5050V	82		
MX-4050V/MX-3550V/MX-3050V	79		

Copier

Original paper size (Max)	A3	
First copy time * ⁶	Full colour	B/W
MX-6050V/MX-5050V	4.8	3.7
MX-4050V/MX-3550V/MX-3050V	6.7	4.7
Continuous copies (Max)	9,999	
Print resolution (dpi)		
Scan (colour)	600 x 600	
Scan (B/W)	600 x 600, 600 x 400	
Print		
MX-6050V/MX-5050V	1200 x 1200, 600 x 600, 9600 (equivalent) x 600 (depending on copy mode)	
MX-4050V/MX-3550V/MX-3050V	600 x 600, 9600 (equivalent) x 600 (depending on copy mode)	
Gradation levels	256	
Zoom range (%)	25 – 400, (25 – 200 using RSPF) in 1% increments	
Preset copy ratios (Metric)	10 ratios (5R/5E)	

Wireless LAN (optional MX-EB18 required)

Compliant regulation	IEEE802.11n/g/b
Access mode	Infrastructure mode, Software AP mode
Security	WEP, WPA/WPA2-mixed PSK, WPA/WPA2-mixed EAP* ⁷ , WPA2 PSK, WPA2 EAP* ⁷

Network Scanner

Scan method	Push scan (via control panel) Pull scan (TWAIN-compliant application)	
Scan speed * ⁸ (ipm) (Max)	One-sided	Two-sided
	80	25
Resolution (dpi) (Max)		
Push scan	100, 150, 200, 300, 400, 600	
Pull scan	75, 100, 150, 200, 300, 400, 600 50 to 9,600 dpi via user setting	
File formats	TIFF, PDF, PDF/A, encrypted PDF, compact PDF* ⁹ * ¹⁰ , JPEG* ¹⁰ , XPS	
Scan destinations	Scan to e-mail, desktop, FTP server, network folder (SMB), USB memory, HDD	
Scanner utilities	Sharpdesk	
Document Filing		
Document filing capacity * ¹¹	Pages	Files
Main & custom folders	20,000	3,000
Quick file folder	10,000	1,000
Stored jobs * ¹²	Copy, print, scan, fax transmission	
Storage folders	Quick file folder, main folder, custom folder (max. 1,000)	

Network Printer

Resolution (dpi)	
MX-6050V/MX-5050V	1200 x 1200, 600 x 600, 9600 (equivalent) x 600
MX-4050V/MX-3550V/MX-3050V	600 x 600, 9600 (equivalent) x 600
Interface	USB 2.0, 10Base-T/100Base-TX/1000Base-T
Supported OS	Windows Server® 2008, 2008R2, 2012, 2012R2, Windows Vista®, Windows® 7, 8.1, 10 Mac OS X 10.6, 10.7, 10.8, 10.9, 10.10, 10.11, 10.12, 10.13* ¹³
Network protocols	TCP/IP
Printing protocols	LPR, Raw TCP (port 9100), POP3 (e-mail printing), HTTP, FTP for downloading print files, IPP, SMB, WSD
PDL	Standard: PCL 6 emulation Optional: Adobe® PostScript®3™
Available fonts	80 fonts for PCL, 139 fonts for Adobe PostScript 3

Fax (optional MX-FX15 required)

Compression method	MH/MR/MMR/JBIG
Communication protocol	Super G3/G3
Transmission time * ¹⁴ (seconds)	Less than 3
Modem speed (bps)	33,600 – 2,400 with automatic fallback
Transmission resolution (dpi)	203.2 x 97.8 (Std) / 406.4 x 391 (Ultra Fine)
Recording width	A3 – A5
Memory (GB)	1 (built-in)

*¹ Long-edge feeding. *² Only short-edge feeding can be used with A5 paper. *³ At rated voltage, 23°C (73.4°F). May vary depending on operating conditions and environment. *⁴ HDD capacity depends on procurement and sourcing status. *⁵ Including adjusters and protuberances *⁶ Long-edge feeding of A4 sheets from 1st paper tray, using document glass, without Auto Colour Selection and Auto Colour mode, MFP in fully ready condition. May vary depending on operating conditions and environment. *⁷ Not applicable to Software AP mode. *⁸ Based on Sharp's A4 standard chart, using document feeder and long-edge feeding. Using factory default settings with Auto Colour Selection off. Scan speed will vary depending on the type of document and the scan settings.*⁹ Requires optional MX-EB11 *¹⁰ Colour/greyscale only. *¹¹ Storage capacity will vary depending on the type of document and the scan settings. *¹² Some features require option(s). *¹³ Mac OS requires MX-PK13 *¹⁴ Based on Sharp's standard chart with approx. 700 characters (A4 long-edge feeding) at standard resolution in Super G3 mode, 33,600 bps, JBIG compression.

Design and specifications are subject to change without prior notice. All information was correct at time of print. The ENERGY STAR logo is a certification mark and may only be used to certify specific products that have been determined to meet the ENERGY STAR programme requirements. ENERGY STAR is a US registered mark. Windows, Windows NT, Windows XP and Windows Vista are registered trademarks of Microsoft Corporation. Adobe and PostScript 3 are either registered trademarks or trademarks of Adobe Systems Incorporated in the U.S. and/or other countries. All other company names, product names and logotypes are trademarks or registered trademarks of their respective owners. ©Sharp Corporation January 2018. Ref: MX-6050V/MX-5050V/MX-4050V/MX-3550V/MX-3050V Brochure Job:18877. All trademarks acknowledged. E&OE.